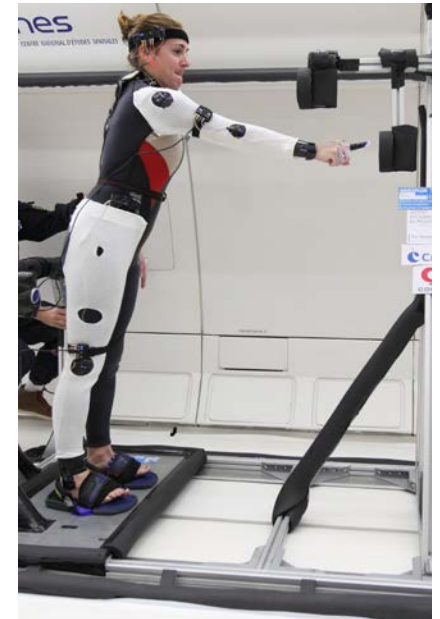
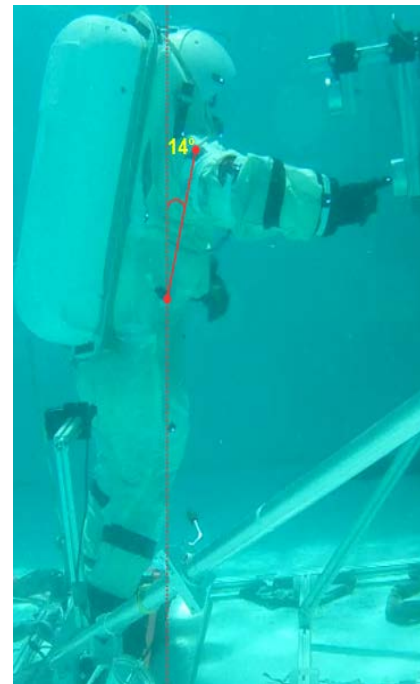
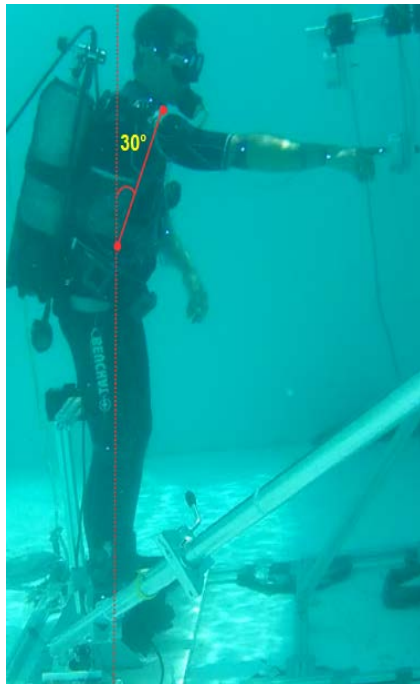


COMPRENDRE LES ADAPTATIONS MOTRICES EN ENVIRONNEMENTS EXTREMES A DES FINS DE SANTE *DE SIMEXPLOR A FLEXMOVE*

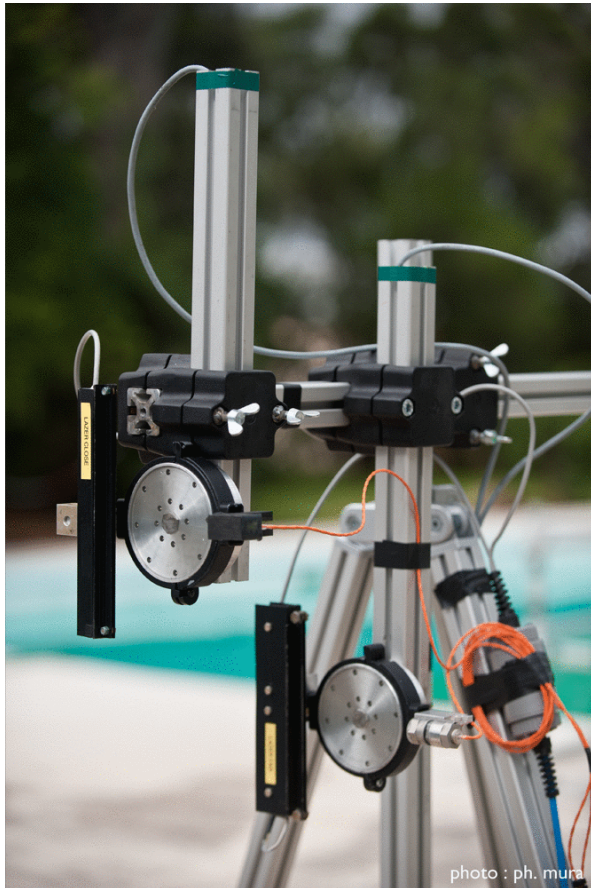


SIMEXPLOR : *De l'immersion subaquatique aux vols paraboliques*

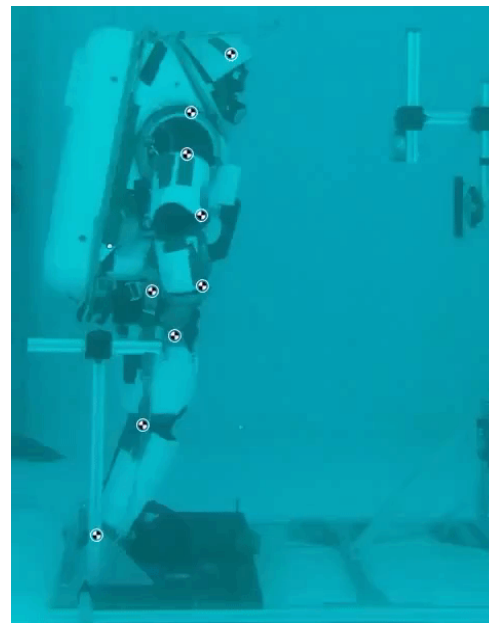
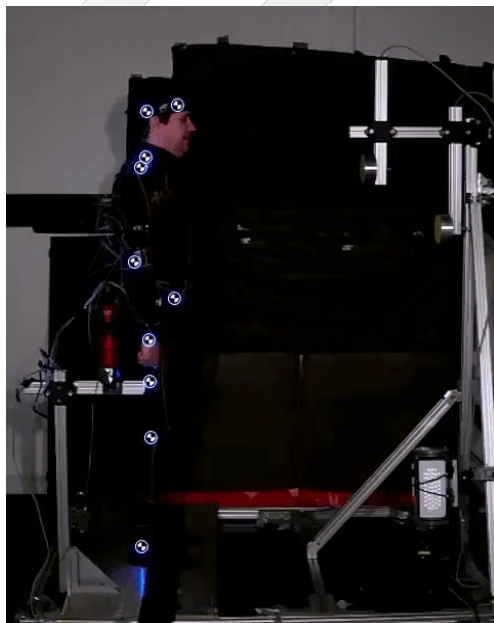
- Adaptations motrices et comparaison entre micropesanteur réelle et simulée
- Mouvements d'atteinte manuelle / Posture




SIMEXPLOR : *De l'immersion subaquatique aux vols paraboliques*

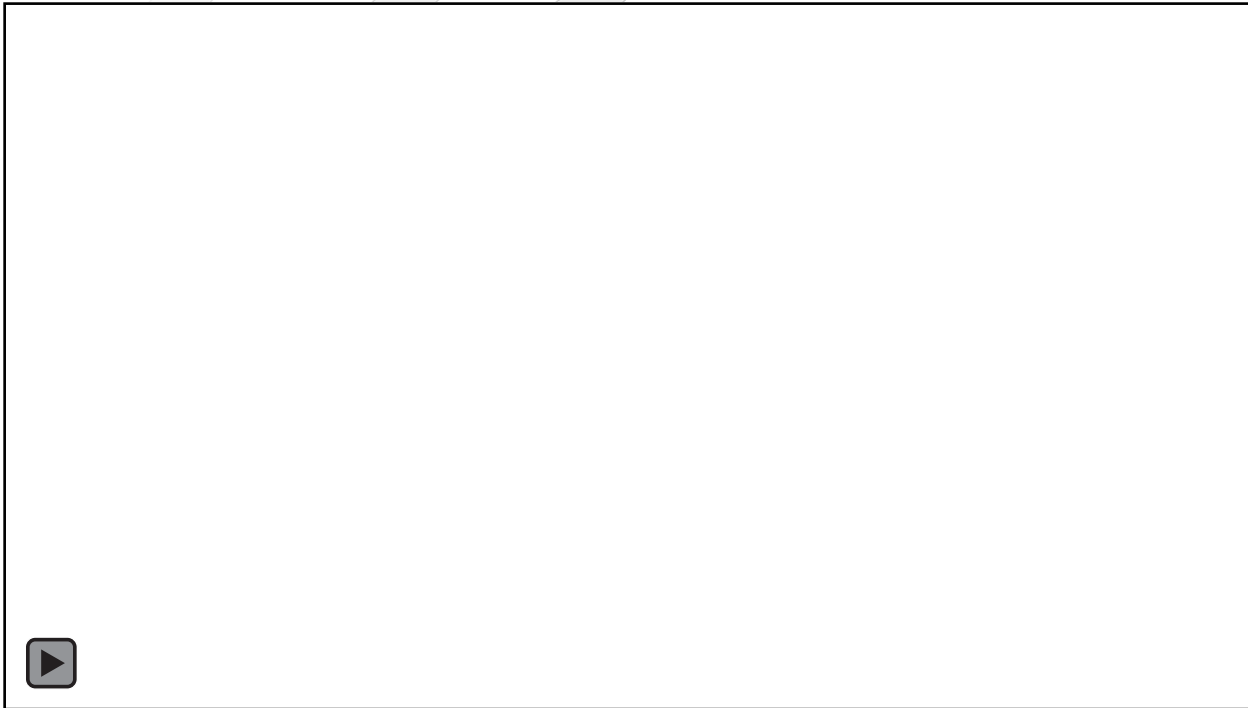



SIMEXPLOR : *De l'immersion subaquatique aux vols paraboliques*



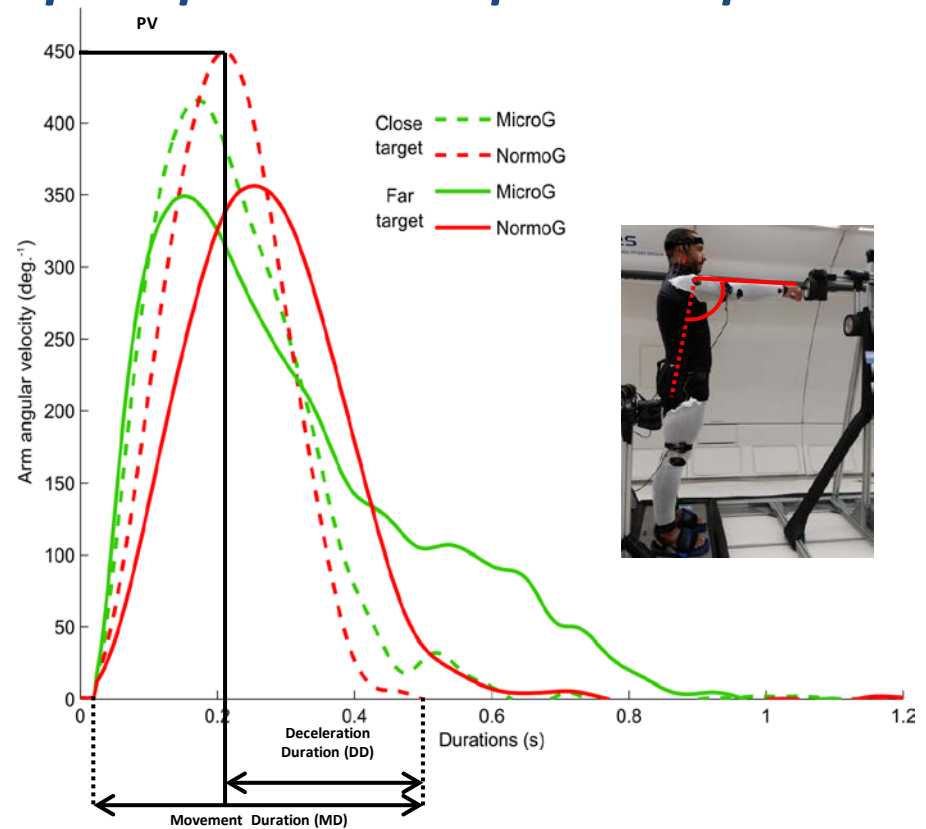
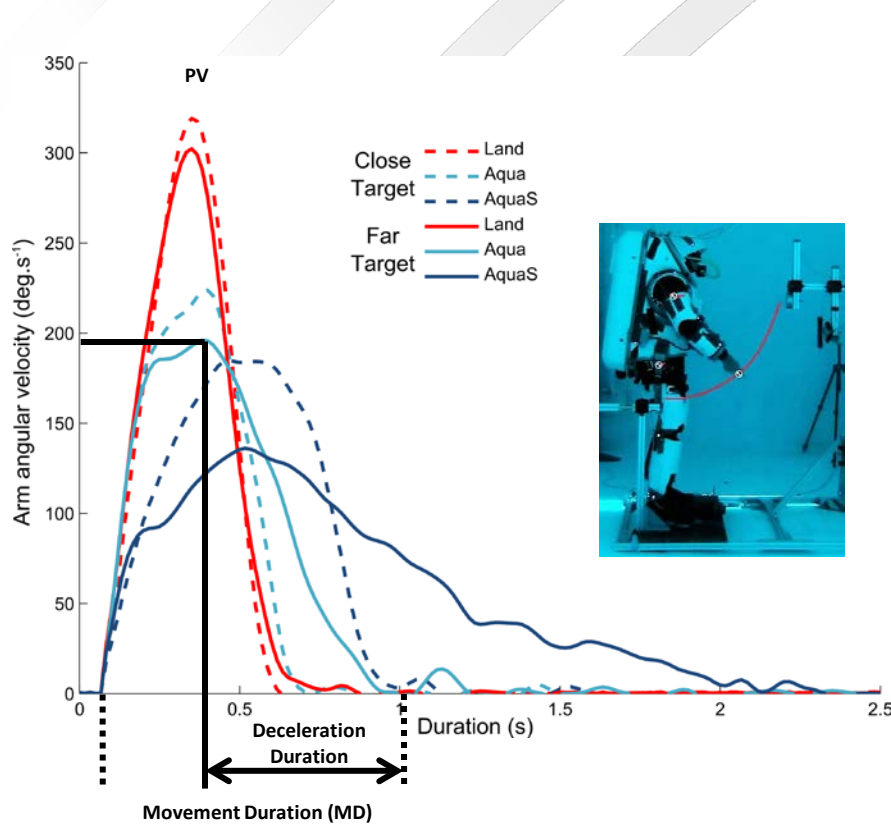
-  Temps de préparation et d'exécution du mouvement
- Performance d'atteinte maintenue
- Adaptations comportementales rapides

SIMEXPLOR : *De l'immersion subaquatique aux vols paraboliques*



-  Temps de préparation et d'exécution du mouvement
- Performance d'atteinte maintenue
- Adaptations comportementales rapides

SIMEXPLOR : De l'immersion subaquatique aux vols paraboliques



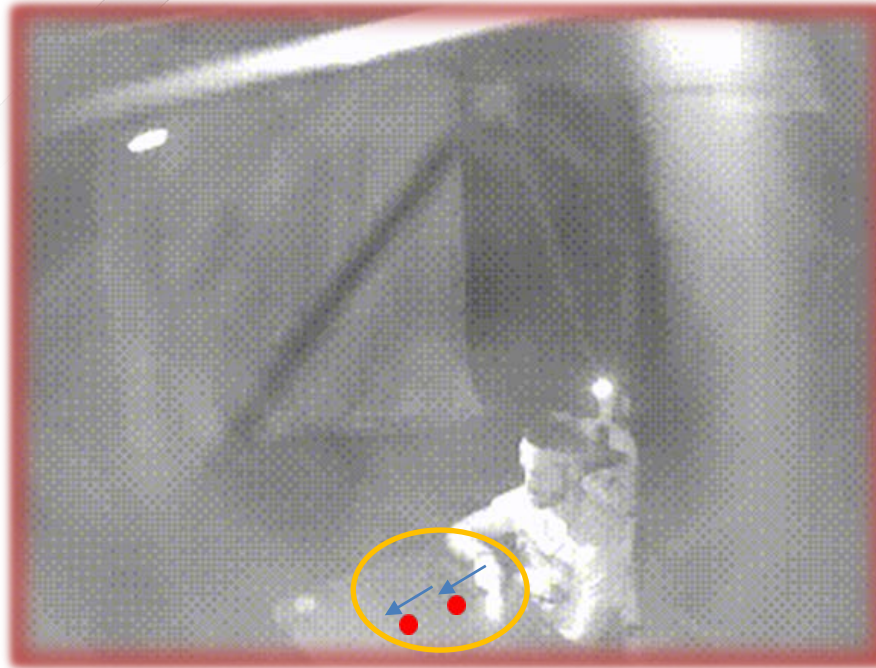
La programmation du geste d'atteinte s'adapte à l'identique en immersion (flottabilité neutre) et en micropesanteur

Macaluso, T., Bourdin, C., Buloup, F., Mille, M.L., Sainton, P., Sarlegna, F.R., Vercher, J.L., & Bringoux, L. (2017). Optimal changes of arm kinematics and postural strategy for whole-body reaching movements in microgravity. **Frontiers in Physiology**, 8: 821.

Macaluso, T., Bourdin, C., Buloup, F., Mille, M.L., Sainton, P., Sarlegna, F.R., Taillebot, V., Vercher, J.L., Weiss, P., & Bringoux, L. (2016). Kinematic features of whole-body movements underwater: Neutral buoyancy effects. **Neuroscience**, 327, 125-135.

Macaluso, T., Bourdin, C., Buloup, F., Mille, M.L., Sainton, P., Sarlegna, F.R., Taillebot, V., Vercher, J.L., Weiss, P., & Bringoux, L. (2016). Simulated weightlessness underwater: the influence of neutral buoyancy on whole-body reaching movements. **ESA/ISGP/CNES Joint Life Sciences Meeting**, Toulouse.

FLEXMOVE : *Corrections du geste en cours d'exécution*



Perturbation du
champ gravito-inertiel

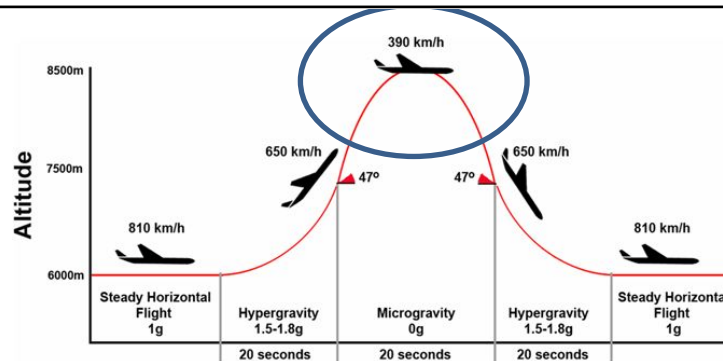
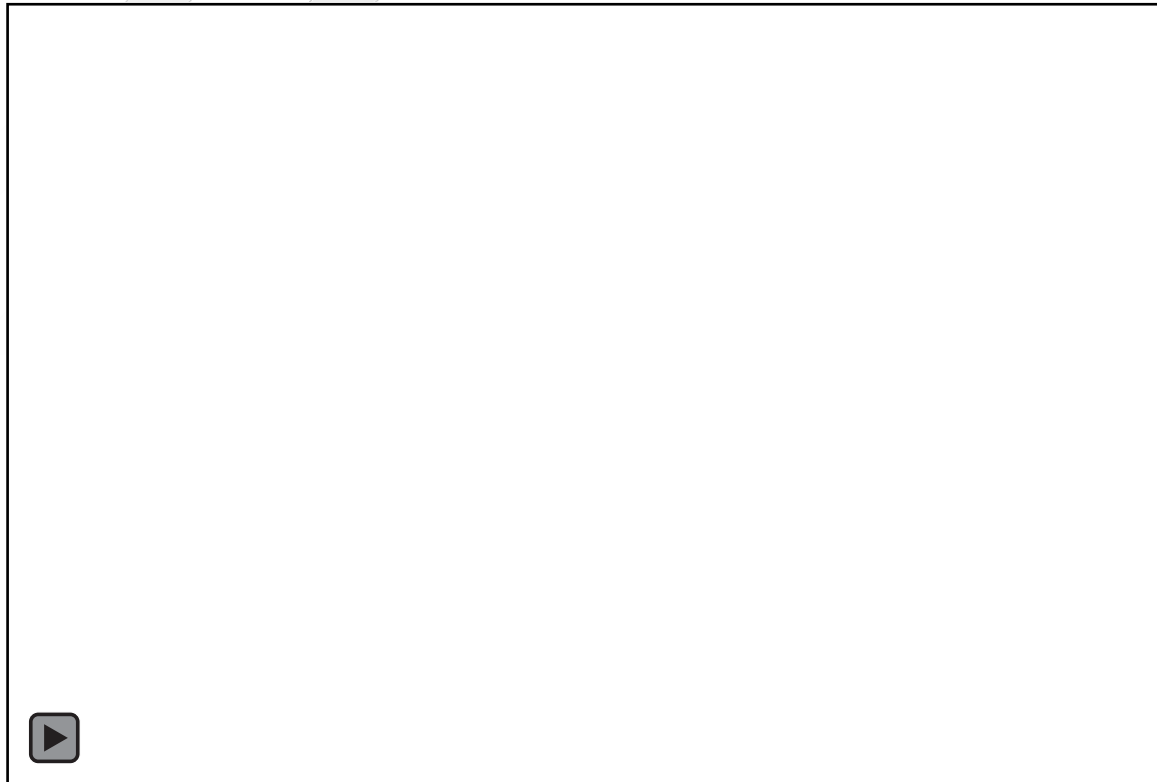
Force de Coriolis et
centrifuge



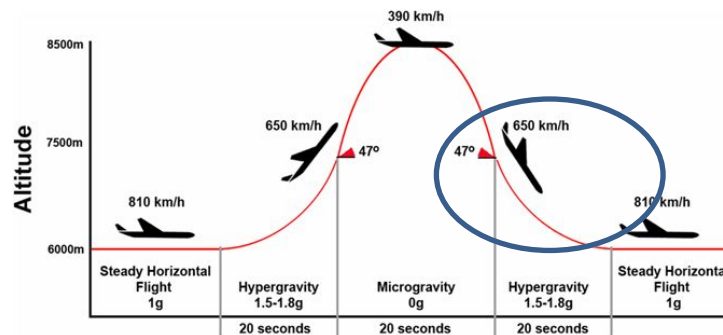
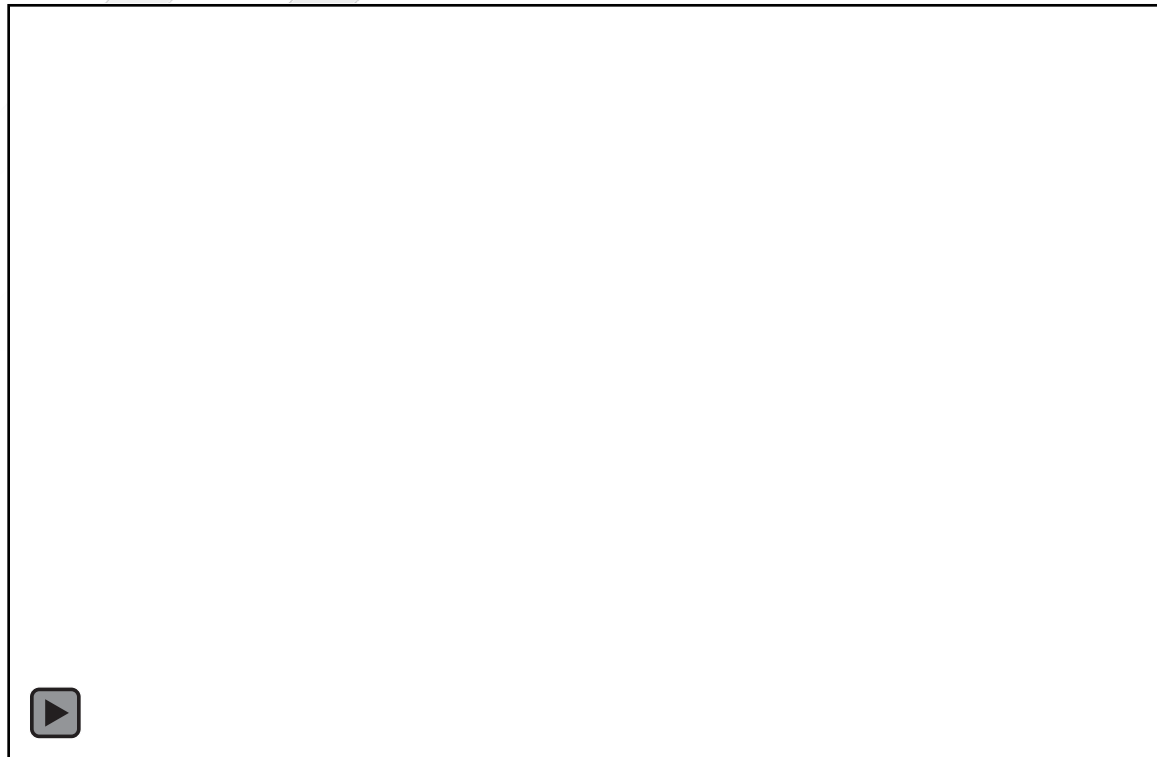
Perturbation visuelle
focale et inopinée

Saut de cible

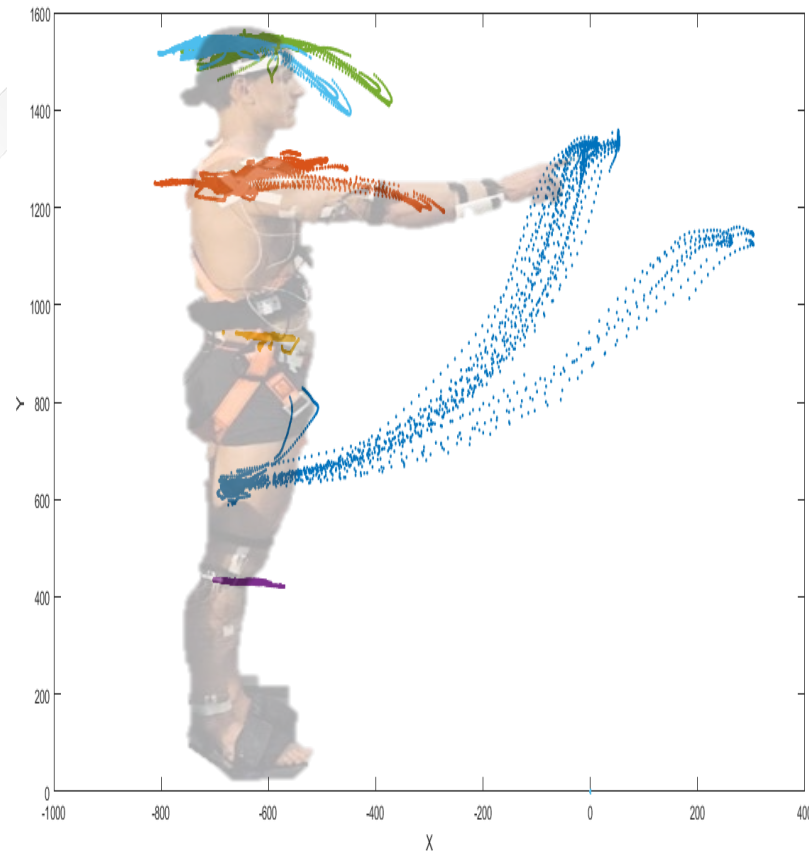
FLEXMOVE : Corrections du geste en cours d'exécution



FLEXMOVE : Corrections du geste en cours d'exécution



FLEXMOVE : Corrections du geste en cours d'exécution



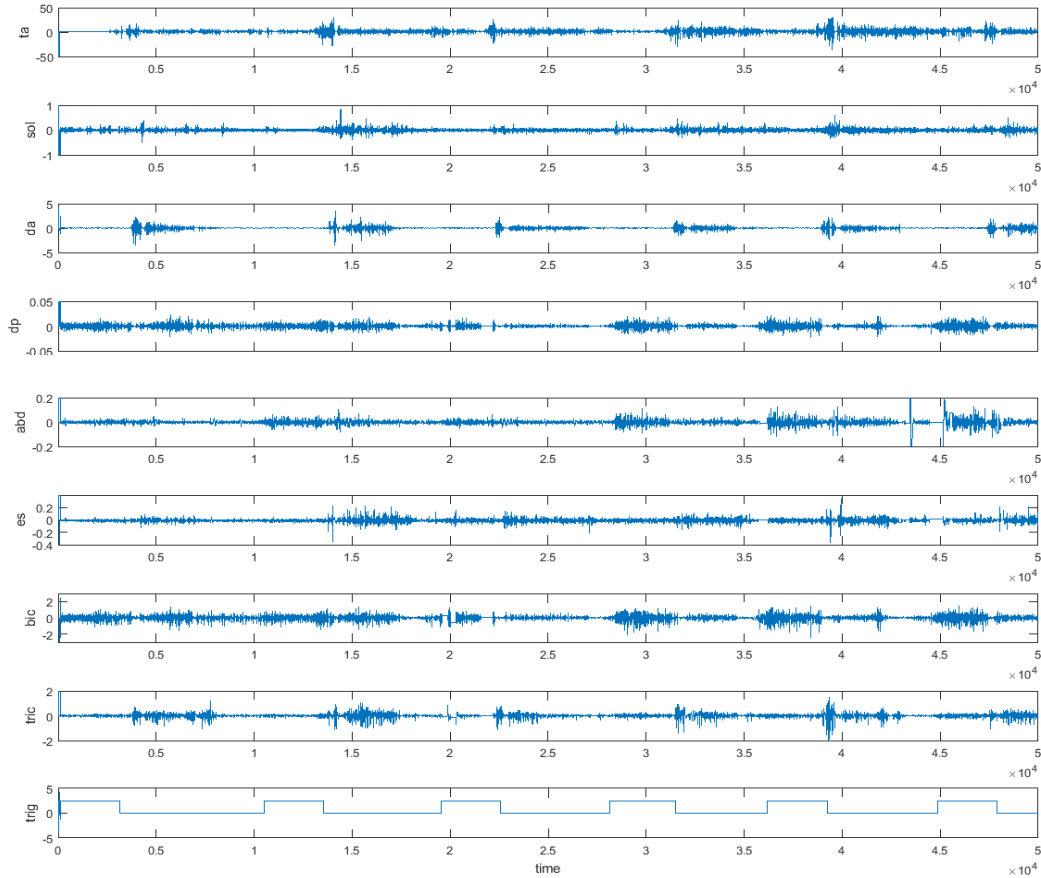
Bringoux, L., Macaluso, T., Sainton, P., Chomienne, L., Buloup, F., Mouchnino, L., Simoneau, M., & Blouin, J. (2020). Double-step paradigm in microgravity: Preservation of sensorimotor flexibility in altered gravitational force field. *Frontiers in Physiology*, *11*: 377. <https://doi.org/10.1152/jn.00381.2019>

White, O., Gaveau, J., Bringoux, L., & Crevecoeur, F. (2020). The gravitational imprint on sensorimotor planning and control. *Journal of Neurophysiology* *124*; 4-19. <https://doi.org/10.1152/jn.00381.2019>

Chomienne, L., Blouin, J., & Bringoux, L. (2021). Online corrective responses following target jump in altered gravitoinertial force field point to nested feedforward and feedback control. *Journal of Neurophysiology*, *125*; 154-165. <https://doi.org/10.1152/jn.00268.2020>

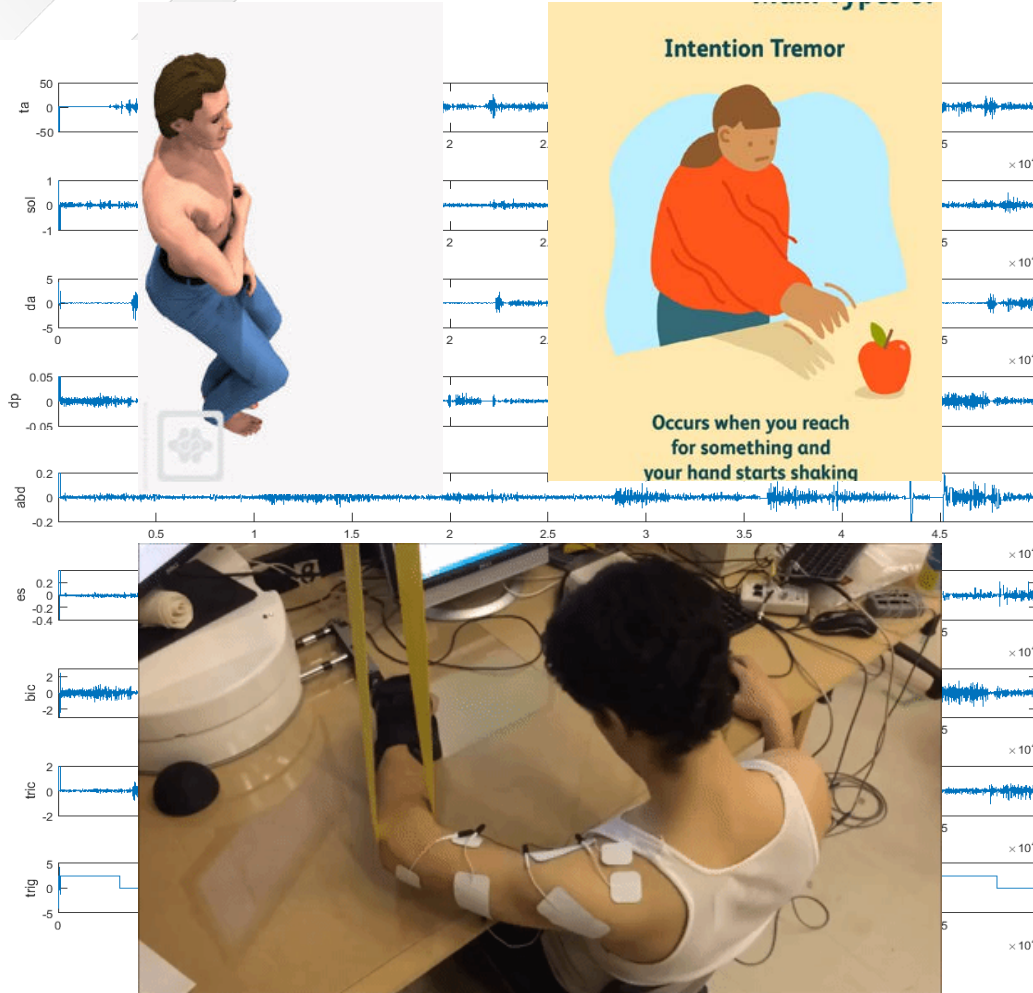
LES ADAPTATIONS EN CHAMPS DE FORCES MODIFIÉS :

Un paradigme pour la compréhension et la réhabilitation de pathologies sensorimotrices ?



LES ADAPTATIONS EN CHAMPS DE FORCES MODIFIÉS :

Un paradigme pour la compréhension et la réhabilitation de pathologies sensorimotrices ?



COMPRENDRE LES ADAPTATIONS MOTRICES EN ENVIRONNEMENTS EXTREMES A DES FINS DE SANTE

Merci de votre attention !

